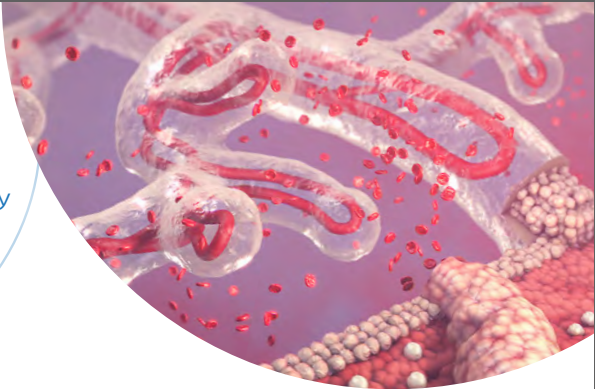


# 2022 MBI THESIS PRESENTATIONS

For more info:  
(410) 955-3213  
medart-info@jhmi.edu

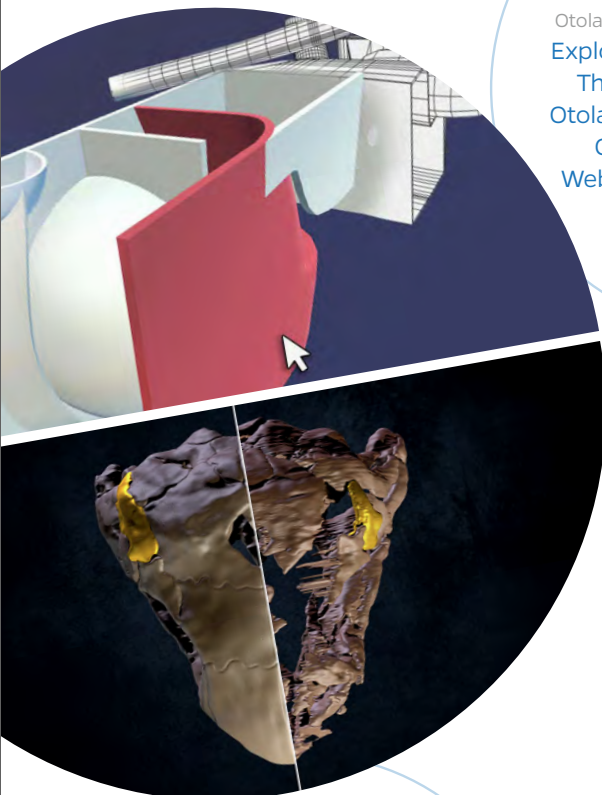
## JASON BRADY

Preceptor: Erin Gomez, MD  
Radiology and Radiological Science  
An Animated Portrayal of Normal  
Placentation and the Pathophysiology  
of Placenta Accreta Spectrum



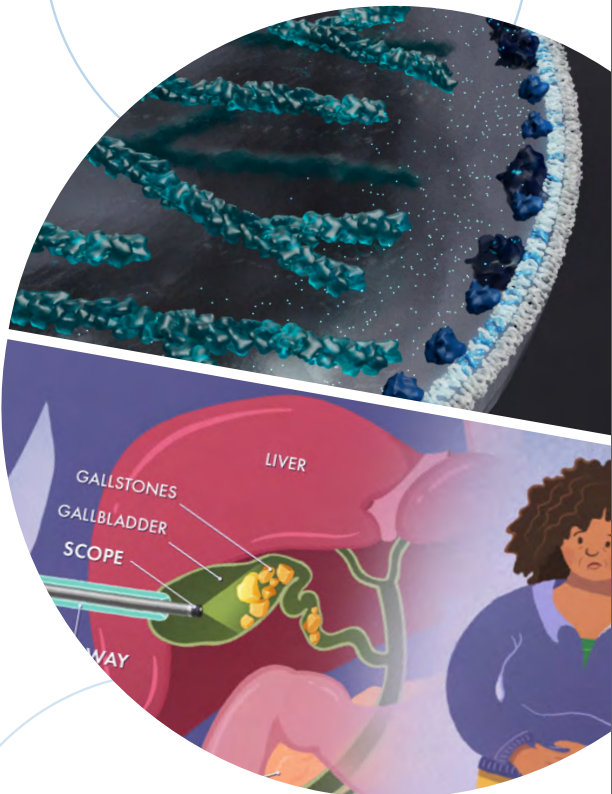
## SHIRLEY LI

Preceptors: Nicholas Rowan, MD  
Anirudh Saraswathula, MD,  
Otolaryngology Head and Neck Surgery  
Exploring the Sinonasal Cavity in  
Three Dimensions: Teaching  
Otolaryngology Surgical Trainees  
Clinical Anatomy Using a  
Web-based Learning Resource



## JIYU KELLY LIM

Preceptor: Peter Devreotes, PhD,  
Cell Biology and Biological Chemistry  
Animating a Novel Mechanism of  
Cell Migration: Signal Transduction  
Excitable Networks (STEN)



FRIDAY

April 22

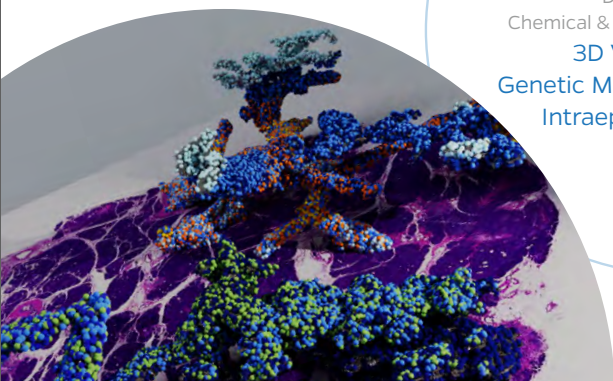
3:00-5:00 pm

CHEVY CHASE  
AUDITORIUM  
and YouTube Live

[youtube.com/c/  
JohnsHopkinsArtsAppliedtoMedicine](https://youtube.com/c/JohnsHopkinsArtsAppliedtoMedicine)

## A. GABY RIVERA-DEL RIO

Preceptor: Gabriel S. Bever, PhD  
Functional Anatomy and Evolution  
Rethinking the Evolution of Temporal  
Fenestrae in Turtles: An Interactive  
Application for Comparative  
Anatomy and Phylogenetics



## TING I WANG

Preceptor: Ralph H. Hruban, MD  
Pathology and Oncology  
Denis Wirtz, PhD  
Chemical & Biomolecular Engineering  
3D Visualization of  
Genetic Mutations in Pancreatic  
Intraepithelial Neoplasia

## JENNIFER A. WANG

Preceptor: Harjit Singh, MD, PhD  
Radiology and Radiological Science  
Understanding Percutaneous  
Cholangioscopy: Designing and  
Evaluating Novel Multimedia Tools  
for Patients and Physicians