

2021 MBI THESIS PRESENTATIONS

DEPARTMENT of **ART** *as applied to* MEDICINE

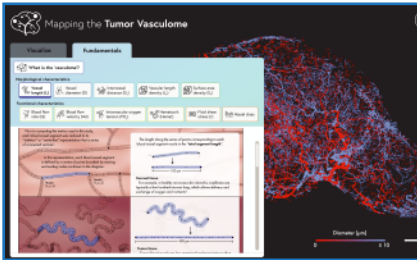
EMILY CHENG

Preceptor: Pradeep Ramulu, MD, MHS, PhD, Professor, Ophthalmology, Chief Glaucoma Division
Visualizing Glaucoma: Accurately Characterizing and Depicting Visual Loss via Virtual Reality



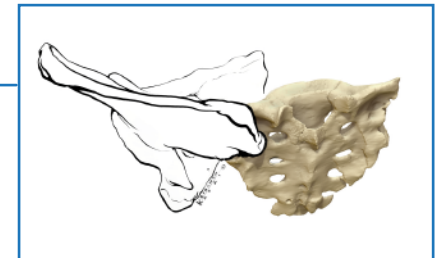
LAURA EKL

Preceptor: Arvind Pathak, PhD, Associate Professor, Radiology, BME, Oncology
Mapping the Tumor Vasculome: A Novel Interactive 3D Visualization of Computationally-Derived Tumor Hemodynamics



KURT ESENWEIN

Preceptor: Adam Sylvester, PhD, Associate Professor, Functional Anatomy & Evolution
Walking the Line: Examining an Illustration of A.L. 288-1 for Anatomical Accuracy and its Implications for Studying Australopithecine Locomotion



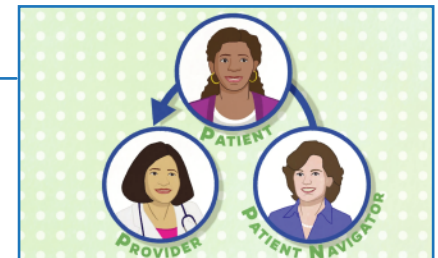
SORA JI

Preceptor: Jody Hooper, MD, Associate Professor, Pathology, Director of Autopsy
The Most Difficult Teachable Moment: Autopsy Consenting



EMILY SLAPIN

Preceptor: Vered Stearns, MD, Professor, Oncology
Director Women's Malignancies Disease Group
Reimagining Delivery of Midlife Womens Healthcare



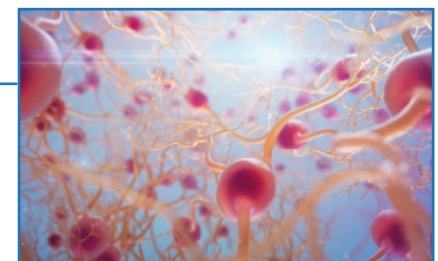
EMILY WU

Preceptor: Erin Gomez, MD, Assistant Professor, Radiology
Teaching MRI Physics: Creating Media with a Focus on the Radiology CORE Exam



SUSIE YUN

Preceptors: Ted Dawson, MD, PhD, Professor, Institute for Cell Engineering
Valina Dawson, PhD, Professor, Institute for Cell Engineering
Educating Patients: Communicating the Gut-Brain Connection in Parkinson's Disease Using Multimedia



For more information,
contact: David Rini
(410) 955-3213
medart-info@jhmi.edu

Friday April 16th, 3:00 to 5:00 pm
YOUTUBE LIVE STREAM
[Click here for live stream](#)