

# 2016 THESIS PRESENTATIONS

ERICA CHIN

*Preceptors: Willibrord Shasha, MD, MPH, LSGO, FWACS*

*Mark Hathaway, MD, MPH*

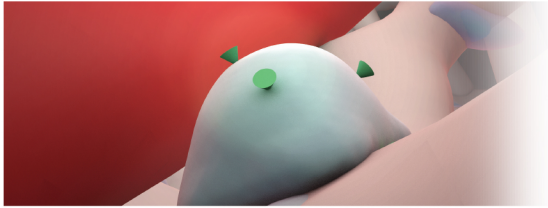
Visualizing Mini-Laparotomy Tubal Ligation Under Local Anesthesia:  
Effective Skills Acquisition for Health Care Workers in Developing Countries



EMILY LING

*Preceptor: Mark J. Soloski, PhD*

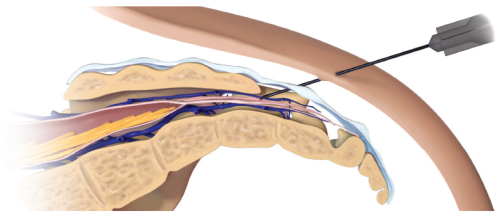
Visualizing B Cell Development: Creating  
An Immunology Video Game



CAITLIN MOCK

*Preceptor: Robert S. Greenberg, MD*

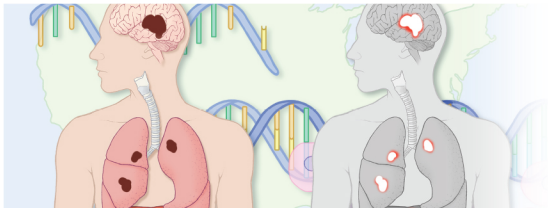
Development of an interactive augmented reality-based application for  
teaching pediatric caudal epidural blockades



KARI OPERT

*Preceptor: Jody E. Hooper, MD*

A Comprehensive and Sensitive Approach to Rapid Autopsy Education  
Via a Web-Based Interactive



LAURA ROY

*Preceptor: Duke Cameron, MD*

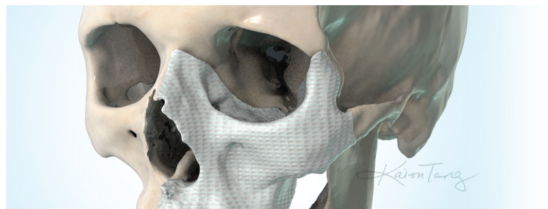
A heart in the hand: 3D printed models of  
congenital heart defects optimized for teaching



KAI-OU TANG

*Preceptor: Warren L. Grayson, PhD*

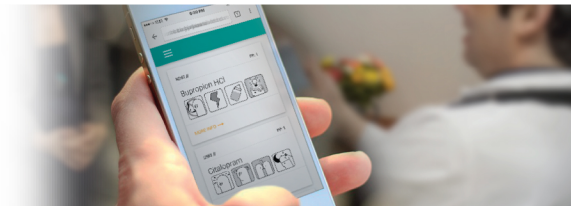
Regenerating Vascularized Craniofacial Bone from 3D-Printed Scaffolds  
and Stromal-Vascular Fraction Cells: An Animation and Interactive  
Presentation for Lay Audience and Scientists



AMY ZHONG

*Preceptor: Adam I. Kaplin, MD, PhD*

Antidepressant-Mining A-Z (AMAZ): Designing a Web-based  
Algorithm and Visual Language for Antidepressant Drug Selection  
to Educate Primary Care Practitioners



2:30 TO 4:30 PM FRIDAY APRIL 29<sup>TH</sup>

Reception to Follow

*Chevy Chase Auditorium Zayed Tower Main Level, Johns Hopkins Hospital*

FOR ADDITIONAL INFORMATION, CONTACT: CORINNE SANDONE (410) 955-3213, MEDART-INFO@JHMI.EDU